

CERTIFICATE OF ANALYSIS

ISO/IEC 17025:2017 ACCREDITATION #103104



Order #: 65710
 Order Name: CBG Kief
 Batch#: 80004545
 Received: 11/16/2020
 Completed: 11/16/2020



American Shaman
 2405 Southwest Blvd
 Kansas City Missouri, 64108
 (913) 486-9889
 info@cbdamericanshaman.com



Sample



N/D
D9-THC

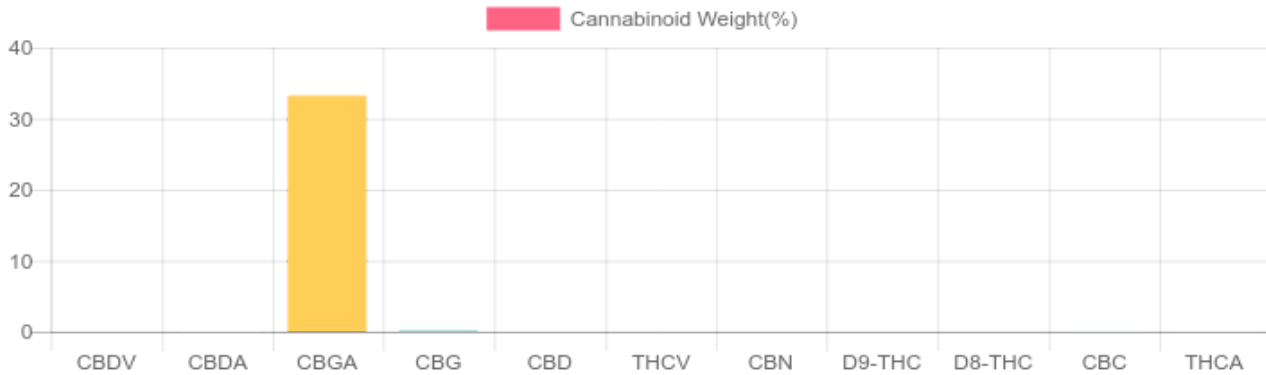
0.012%
Total CBD

Cannabinoids Test

SHIMADZU INTEGRATED UPLC-PDA
 GSL SOP 400

UPLOADED: 11/10/2020 11:03:53

Cannabinoids	LOQ	weight(%)	mg/g
D9-THC	10 PPM	N/D	N/D
THCA	10 PPM	0.014%	0.137
CBD	10 PPM	N/D	N/D
CBDA	20 PPM	0.014%	0.140
CBDV	20 PPM	N/D	N/D
CBC	10 PPM	0.026%	0.262
CBN	10 PPM	N/D	N/D
CBG	10 PPM	0.101%	1.006
CBGA	20 PPM	33.259%	332.586
D8-THC	10 PPM	N/D	N/D
THCV	10 PPM	N/D	N/D
TOTAL D9-THC		N/D	N/D
TOTAL CBD*		0.012%	0.123
TOTAL CANNABINOIDS		33.414%	334.131



Reporting Limit 10 ppm
 *Total CBD = CBD + CBDA x 0.877
 N/D - Not Detected, B/LOQ - Below Limit of Quantification

Dr. Andrew Hall, Ph.D., Chief Scientific Officer

Ben Witten, MS, MT., Lab Director

Green Scientific Labs
 info@greenscientificlabs.com
 1-833 TEST CBD



Green Scientific Labs uses its best efforts to deliver high quality results and to verify that the data contained therein are based on sound scientific judgment and levels listed are guidelines only and all data was reported based on standard laboratory procedures and deviations. However Green Scientific Labs makes no warranties or claims to that effect and further shall not be liable for any damage or misrepresentation that may result from the use or misuse of the data contained herein in any way. Further, Green Scientific Labs makes no claims regarding representations of the analyzed sample to the larger batch from which it was taken. Data and information in this report are intended solely for the individual(s) for whom samples were submitted and as part of our strict confidentiality policy, Green Scientific Labs can only discuss results with the original client of record.

CERTIFICATE OF ANALYSIS

ISO/IEC 17025:2017 ACCREDITATION #103104



Order #: 65710
 Order Name: CBG Kief
 Batch#: 80004545
 Received: 11/16/2020
 Completed: 11/16/2020



American Shaman
 2405 Southwest Blvd
 Kansas City Missouri, 64108
 (913) 486-9889
 info@cbdamericanshaman.com



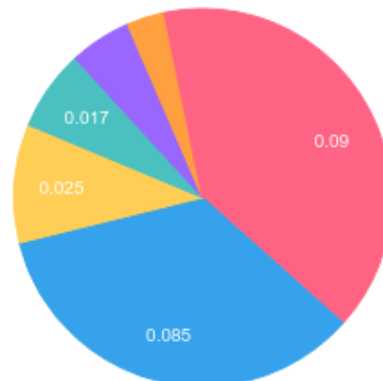
TERPENES: TOTAL (0.250%)

Headspace GCMS - Shimadzu GCMS QP2020 with HS20

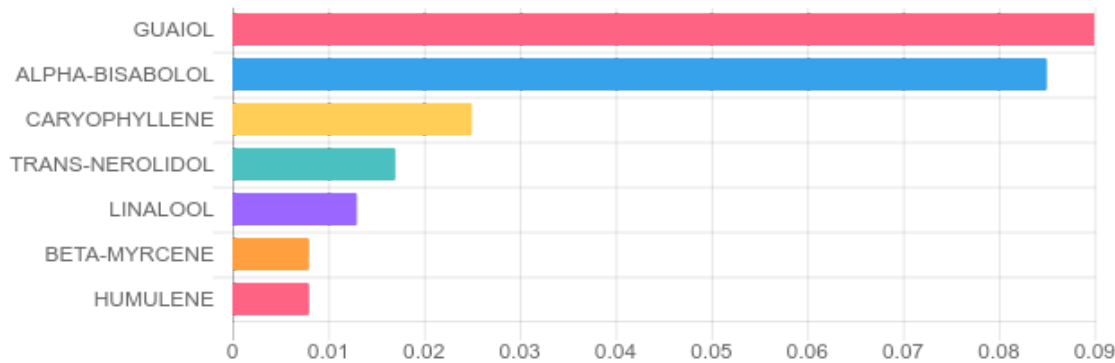
GSL SOP 404
 Prepared: 11/06/2020 16:51:11
 Uploaded: 11/09/2020 13:32:00

Terpene	Results (%)	LOQ (%)	LOD (%)
ALPHA-BISABOLOL	0.085%	0.0067%	0.0063%
BETA-MYRCENE	0.008%	0.0067%	0.0063%
BETA-PINENE	B/LOQ	0.0067%	0.0063%
CARYOPHYLLENE	0.025%	0.0067%	0.0063%
GUAIOL	0.090%	0.0067%	0.0063%
HUMULENE	0.008%	0.0067%	0.0063%
LIMONENE	B/LOQ	0.0067%	0.0063%
LINALOOL	0.013%	0.0067%	0.0063%
TRANS-NEROLIDOL	0.017%	0.0067%	0.0063%

Terpenes Breakdown



Top Terpenes Results:



Tested for but not present:

CAMPHENE, 3-CARENE, ALPHA-TERPINENE, TRANS-BETA-OCIMENE, P-CYMENE, CIS-BETA-OCIMENE, EUCALYPTOL, GAMMA-TERPINENE, TERPINOLENE, ISOPULEGOL, GERANIOL, CIS-NEROLIDOL, CARYOPHYLLENE OXIDE

Dr. Andrew Hall, Ph.D., Chief Scientific Officer

Ben Witten, MS, MT., Lab Director

Green Scientific Labs
 info@greenscientificlabs.com
 1-833-TEST-CBD



Green Scientific Labs uses its best efforts to deliver high quality results and to verify that the data contained therein are based on sound scientific judgment and levels listed are guidelines only and all data was reported based on standard laboratory procedures and deviations. However Green Scientific Labs makes no warranties or claims to that effect and further shall not be liable for any damage or misrepresentation that may result from the use or misuse of the data contained herein in any way. Further, Green Scientific Labs makes no claims regarding representations of the analyzed sample to the larger batch from which it was taken. Data and information in this report are intended solely for the individual(s) for whom samples were submitted and as part of our strict confidentiality policy, Green Scientific Labs can only discuss results with the original client of record.